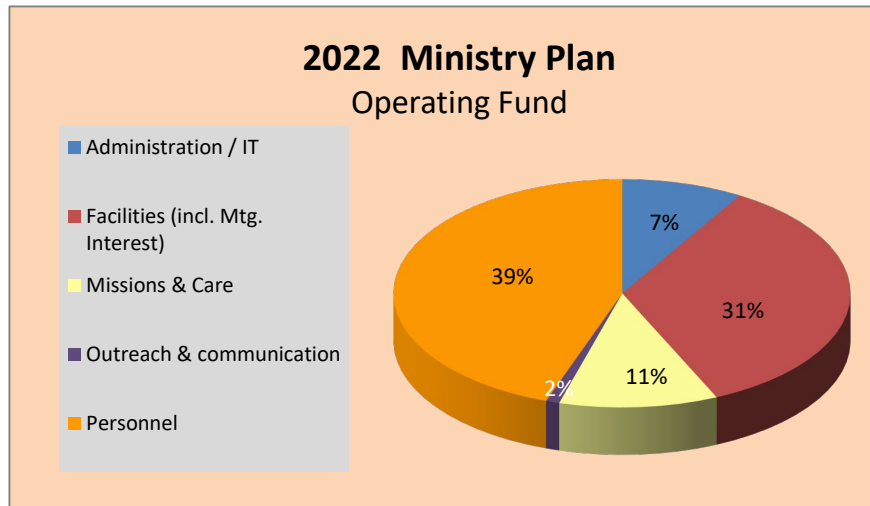


RCC Financial Update 2021 & 2022 Plan



OPERATING FUND	2021 PLAN	12/31/2021 ACTUAL	2022 PLAN
	\$	\$	\$
Total Income	561,600	611,181	572,000
Total Expense	561,630	564,578	571,999
Surplus / shortfall	-30	46,603	1
Transfer to Cash Reserves		46,000	

INVITING PEOPLE TO JOURNEY WITH JESUS

Here's a partial list of how you helped people to take their next steps on their Journey with Jesus in 2021.

Baptisms:	7
First Time Donors:	34
Avg. Onsite Attendance:	143
Avg. Online Attendance:	151

Avg. Per Capita Giving:	\$40.16
Avg. Weekly Budget:	\$10,800
Avg. Weekly Giving:	\$11,356

# of Life Groups:	12
# of Ministry Leaders:	16
# of Volunteers:	138
Student Ministry Leaders:	5
Student Groups:	4

BECAUSE YOU GAVE: JOURNEY OUT GLOBAL / LOCAL

Missions of Hope, Kenya	\$14,400
Enlace, El Salvadore	\$5,040
Restoration House Ministries	\$8,800
Journey Out Local	\$11,940
Total	\$40,180